

ΔSTAR.

You're in good hands



YOU CAN RELY ON US AT ALL TIMES



www.tuv.com
ID 0000034043



i-NOVO AWARDS 2015
PhysioGo

www.astar.eu

Substantive support
www.ephysootechnology.com 

Together for Many Years

Trust is a value developed throughout the years while building good mutual relationships. ASTAR works on it since 1995, constantly broadening its experience in designing the highest quality medical equipment. That our products and services meet all the expectations for us is the matter for pride and an impulse for constant growth in this area. In addition, we continue to adhere to the highest standards, analysing the quality of our devices, both at the designing stage and during postproduction tests.



The domain of ASTAR is the manufacture of devices for electrotherapy, laser therapy, ultrasound therapy, magnetotherapy, light therapy, vacuum therapy and shockwave therapy.

At the designing and manufacturing stages, the foundation is the thorough knowledge of the specialists engaged by ASTAR. It is a team of experts constantly extending their expertise and analysing every detail of the devices they design. Their dedication entails constant search for new solutions to raise the comfort of ASTAR equipment operation and optimise the effects of the therapies.

We operate on numerous markets outside Poland. Our products are known and appreciated in Europe, Asia, Africa, South & North America as well as in Australia.

An important sign of our effective work is the awards received from sector experts that have recognized ASTAR products on numerous occasions. We were rewarded as the "Gold Quality of the Year" in the Quality Promotion Program and with the Business Gazelle in 2010, 2014 and 2015.

ASTAR.

Impactis M+
PhysioMG
Polaris HP
PhysioGo



PREMIUM PRODUCT LINE



Impactis M+

Shockwave Therapy



The shockwave therapy is one of the most effective methods for treating musculoskeletal disorders and for conducting professional aesthetic medicine treatments (dedicated transmitter).

Impactis M+ is the latest product of the renowned Polish brand Astar – a market leader in physical therapy and rehabilitation equipment. Due to modern solutions, excellent service support and high quality of offered devices, Astar is a brand appreciated both in Poland and around the world.

Based on more than twenty five years of Astar experience, a new improved model of the shockwave therapy device from the Impactis series has been created. The Impactis M+ has been designed with even greater ergonomics in mind. It has all the features of the Impactis M device, trusted by thousands of specialists in the field of the physical therapy, along with additional functions that increase the convenience of use and expand the therapeutic possibilities of the device.

Intuitive operation, improved software of built-in treatment programs and a new pulse emission mode make the premiere of the Impactis M+ device one of the most awaited among Astar devices.

By using the frequency range from 1 up to 25 Hz, Impactis M+ allows you to increase patient comfort during the treatment, and the specially designed, comfortable bag makes the device a fully mobile support in environmental therapy.

The shockwave therapy is a quick and non-invasive way to eliminate nagging pain. Positive effects of the treatment are felt after a series of 3-4 treatments with a weekly break.

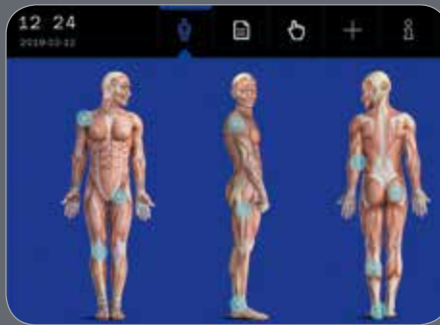
The duration of the treatment is only about 10 minutes.





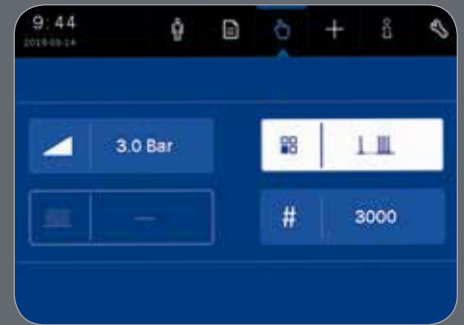
Features

- 7" touchscreen
- Illustrated treatment encyclopaedia
- Modern interface
- Spring shock absorber
- Treatment statistics



Anatomical mode

Built-in treatment programs assigned to individual parts of the body facilitate the work with the patient. The user can also save favourite programs and treatment sequences.



New pulse emission method

Impactis M+ has been enriched with an additional, interval emission mode. In addition, the applicator can work in continuous, single mode or "burst" mode.



Program mode

The operation of the device is intuitive and simple. The device has 44 predefined treatment programs allowing quick access to selected therapies and manual operation mode. The innovation is that Impactis M+ gives the possibility to edit and save them.



Reliability

The manufacturer guarantees 2 million shocks. The device automatically monitors their number, and the self-test function informs the user when the number exceeds 1.8 million.

The regenerative applicator kit allows you to perform another 2 million shocks.



Mobility

The device can be adapted to work in the physiotherapy practice center as well as in environmental therapy at the patient's home. Impactis M+ is light (only 7 kg), and a dedicated bag will fit the device together with its accessories.



Duration of treatment
10 minutes



3-4 treatments
with weekly breaks

Impactis M+



Technical specification



SHOCKWAVE THERAPY

- dedicated transmitter for aesthetic medicine
- applicator with an integrated **spring shock absorber** absorbing vibrations
- **ergonomic silhouette** of the transmitter cap improving the holding comfort
- the device in its original version allows for **2 000 000** shocks
- the applicator regeneration kit allows for another **2 000 000** shocks

SHOCKWAVE EMISSION MODES

- single
- continuous
- Burst
- **Interval**

TREATMENT PROGRAMS

44 preset treatment programs
50 user-defined programs

THERAPEUTIC EFFECTS

- analgesic and anti-inflammatory, by blocking the induction and transmission of pain signals. Energy stimuli trigger cell metabolism and improve blood circulation in the area of pain.
- disintegrative (leads to removing calcified fibroblasts),
- regenerative, repair and immune,
- relaxing thanks to the reduction of muscle tension,
- improving microcirculation,
- increasing density and improving the quality of connective tissue, mainly by increasing production of collagen.

APPLICATION OF A SHOCKWAVE IN AESTHETIC MEDICINE

The varied effects depend on type of applicator used and the program:

- cellulite reduction,
- smoothing of scars and skin irregularities,
- smoothening stretch marks,
- skin firmness,
- levelling the irregularity of tissues after liposuction,
- collagen production – tissue reinforcement and rejuvenation,
- neoplasia of the vascular sub cutis supply,
- better blood circulation and metabolism of the treated area,
- lymphatic tissue drainage,
- evident strengthening of the skin.

Functional qualities

MOBILITY

compact size, low weight, transport bag

SW APPLICATOR

ergonomic silhouette, sealing and low weight

INTERFACE

simplicity

Technical parameters

compressor pressure	1 – 5 bar
emission frequency of impulses (shocks)	1 – 25 Hz
shocks range	1 – 10 000
max. energy density on the transmitter surface	3 mJ/mm ²
mains supply	100-240 V, 47-63 Hz, 24VDC 6,25 A
dimensions of the device	36,1 x 30,4 x 15,1 cm
controller weight	7 kg
weight with the applicator and power unit	9 kg

Technical parameters of shockwave at the maximal working pressure

energy density, steel transmitter TR10	0,38 mJ/mm ²
energy density, steel transmitter TR15	0,64 mJ/mm ²
energy density, steel transmitter TR20	0,82 mJ/mm ²
energy density, steel transmitter TR35	0,95 mJ/mm ²
energy density, titanium transmitter TR10-Ti	0,38 mJ/mm ²
energy density, titanium transmitter TR15-Ti	0,53 mJ/mm ²
energy density, titanium transmitter TR20-Ti	0,82 mJ/mm ²
positive pressure	max. 13,1 MPa
negative pressure	max. -11,3 MPa

Detailed information
www.impactis.com.pl

Standard accessories

mains cable	1 pc.
switch mode power supply	1 pc.
shockwave applicator	1 pc.
transmitter 10 mm	1 pc.
transmitter 15 mm	1 pc.
transmitter 20 mm	1 pc.
titanium transmitter 15 mm	1 pc.
spare gaskets 8x3; 12x3; 13x3	2 pcs.
spare elastomer spring	2 pcs.
ultrasound gel 500 g	1 pc.
spare time-lag fuse	1 pc.
applicator holder	1 pc.
projectile chamber spanner	1 pc.
screwdriver for fixing the holder	1 pc.
display cloth	1 pc.
display stylus	1 pc.
user guide	1 pc.

Optional accessories

transmitter 35 mm
titanium transmitter 10 mm
titanium transmitter 20 mm
regeneration kit (projectile system)
hearing protector
bag for the unit and accessories
trolley dedicated for the unit and accessories



Transmitters' diameters:
10, 15, 20 and 35 mm

PhysioMG

New generation of magnetotherapy

The new PhysioMG family of devices enables to carry out the therapy based on three controllers in combination with solenoid, plate applicators on a stand and local ones, fastened by belts.

Along with the new controllers, a new couch and trolley for CS35 applicator have also been created.



Dual Mode

PhysioMG 825 and 827 units are able to work with two simultaneously cooperating applicators in Dual Mode: a solenoid applicator with systemic effect and plate applicators with local effect.



*Magnetic stripes
sensory indicator
of the magnetic field activity*





Magnetic Field Visual Indicator

A system of visual indication of field activity in the form of light illuminators has been introduced in all solenoid applicators.



Frequency Spectrum

Possibility of using a variable therapeutic frequency, the so-called Spectrum (within the range of 0-50 Hz) in the course of treatment.

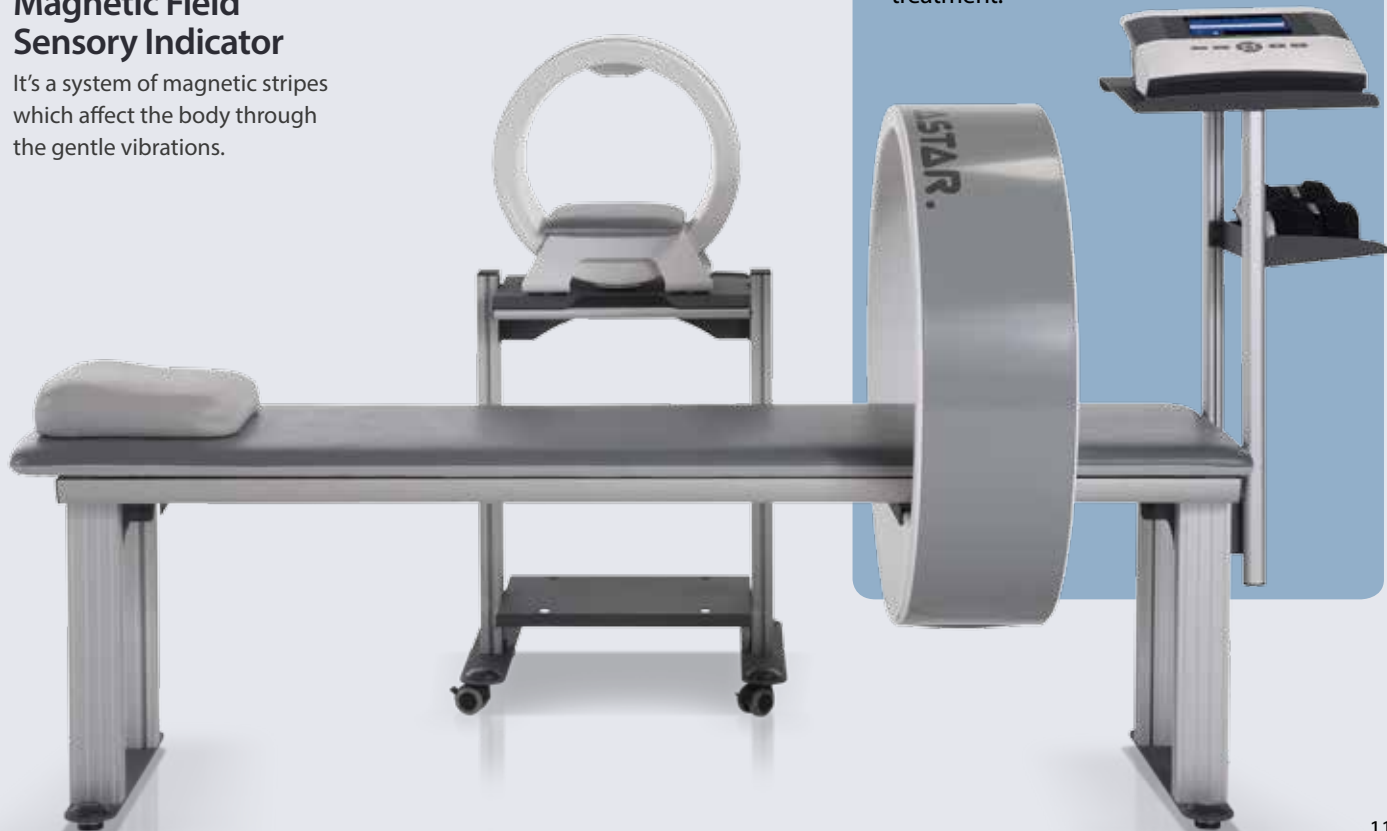


Magnetic Field Sensory Indicator

It's a system of magnetic stripes which affect the body through the gentle vibrations.

NEW SOLENOID APPLICATORS AND MAGNETIC FIELD COUCH

- CS60 and CS75 solenoid applicators on running system integrated with the couch.
- Built-in illuminator – visual indicator of magnetic field activity.
- Equipped with a sensory indicator of magnetic field activity in the form of magnetic stripes.
- CS75 applicator intended for operation with PhysioMG 827 model only.
- CS35 applicator with built-in cushion at the application site increasing the patient's comfort during the treatment.
- New design of trolley for CS35 solenoid applicator.
- New couch with cutting edge design characterized by the outstanding durability and stability.
- Materials used for the construction of the couch were chosen so as to not interfere with the magnetic field power lines generated by the applicators.
- A replaceable couch headrest increases the patient's comfort during the treatment.



PhysioMG 815



The unit has been designed in collaboration with physiotherapists who specialize in magnetic field treatment. Based on their experience, a device was created which operation is simple and intuitive, and the built-in 3D Treatment Encyclopedia allows the selection of the most effective treatment for individual disease entities.

A fully functional, one –channel magnetotherapy unit PhysioMG 815 has up to 124 preset treatment programs available and a 5-inch color display with a touch panel.

ERGONOMY

- visual indicator of magnetic field activity (light illuminator)
- sensory indicator of a magnetic field activity (magnetic stripes)
- magnetic field frequency range settings with an accuracy of 0.01 Hz using the on-screen keyboard
- treatment time settings with an accuracy of 1 s using the on-screen keyboard
- one treatment channel
- 5" color display with a touch panel
- operation mode: program/ manual
- preset treatment program base
- treatment programs selected by name or medical field
- illustrated encyclopedia with treatment methodology description
- concise list of favorite programs
- edition of user-defined program and sequence names
- statistics of performed treatment procedures
- buzzer volume settings
- self-test – systematic control of the unit

MAGNETIC FIELD

- shape: rectangular modified, triangular, sinusoidal, pulsed, semi-rectangular modified, semi-triangular, semi-sinusoidal, half-pulsed
- continuous and pulse emission
- wide frequency range
- high magnetic field induction

TREATMENT PROGRAMS AND SEQUENCES

- 50 preset treatment programs for CS60 applicator
- 28 preset programs for CS35 applicator
- 46 preset treatment programs for CP applicator
- 50 user-defined programs
- 10 user-defined sequences
- favorite programs function





Technical parameters

Maximum nominal induction in the applicator geometric center:

solenoid applicator CS60	4 mT
solenoid applicator CS35	10 mT
CP applicator	3 mT

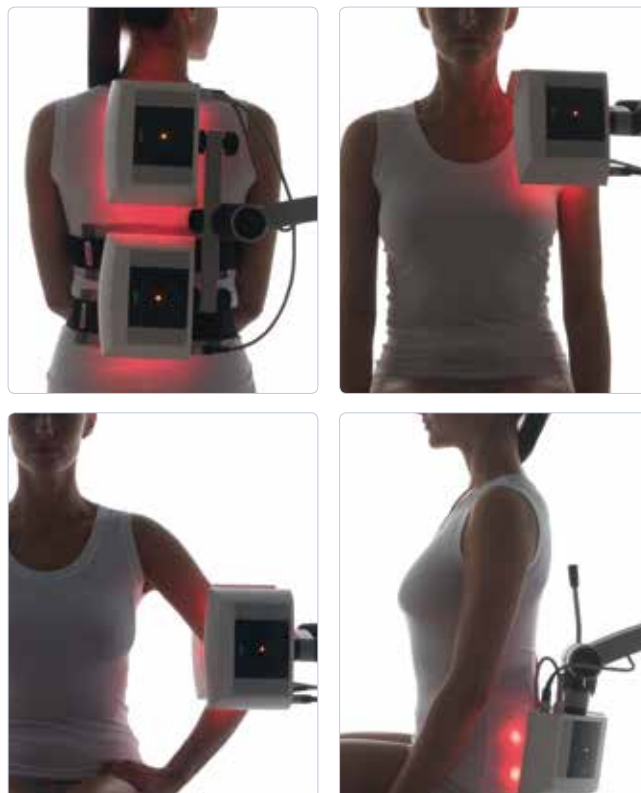
Maximum nominal induction at the applicator surface:

solenoid applicator CS60	6 mT
solenoid applicator CS35	12 mT
CP applicator	12,5 mT

Maximum value of induction change (peak-to-peak value):

solenoid applicator CS60	12 mT
solenoid applicator CS35	24 mT
CP applicator	25 mT

Pulse mode parameters	pulse 1 s/ pause 0,5 – 8 s
frequency spectrum	0 – 50 Hz
treatment timer	maximum 60 min.
power supply	230 V \pm 10 % 50/60 Hz, 350 VA
controller dimensions	34 x 28 x 11 cm
controller weight	max 7 kg



Standard accessories

Mains cable	1 pc.
Spare fuse WTA-T 3,15 A/250 V	2 pcs.
Magnet	1 pc.
protective goggles	1 pc.
touchscreen stylus pen	1 pc.
touchscreen cleaning cloth	1 pc.
user guide	1 pc.

Optional accessories

Solenoid applicator CS60
Solenoid applicator CS35
CP plate applicator with a stand
Magnetic field couch
Trolley for CS35 magnetic field applicator



PhysioMG 825



This model was created based on modern technological solutions that enable achieving excellent therapy effects thanks to the possibility of performing Dual Mode treatments.

It is equipped with two independent treatment channels, giving the opportunity to perform two treatments simultaneously using separate treatment parameters. The user can select from a wide base of disease entities choosing from 213 built-in treatment programs.

Its 5-inch color touchscreen allows for precise setting of all possible parameters in manual operation mode.

ERGONOMY

- Dual Mode treatments
- visual indicator of magnetic field activity (light illuminator)
- sensory indicator of a magnetic field activity (magnetic stripes)
- magnetic field frequency range settings with an accuracy of 0.01 Hz using the on-screen keyboard
- treatment time settings with an accuracy of 1 s using the on-screen keyboard
- two independent treatment channels
- 5" color display with a touch panel
- operation mode: program/ manual
- preset treatment program base
- treatment programs selected by name or medical field
- illustrated encyclopedia with treatment methodology description
- concise list of favorite programs
- edition of user-defined program and sequence names
- statistics of performed treatment procedures
- buzzer volume settings
- self-test – systematic control of the unit

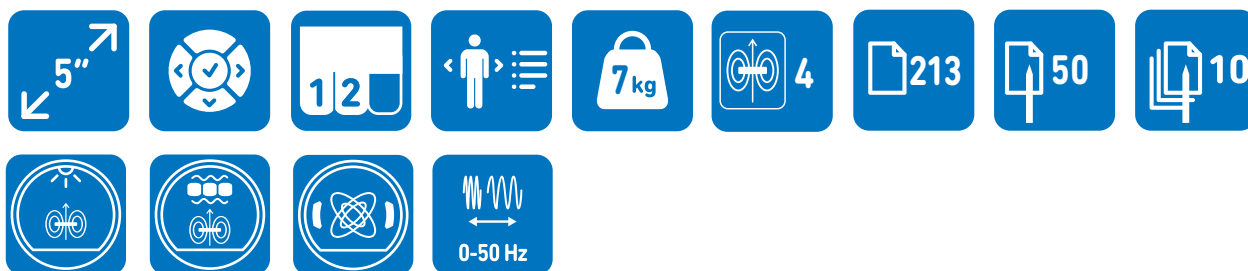
MAGNETIC FIELD

- shape: rectangular modified, triangular, sinusoidal, pulsed, semi-rectangular modified, semi-triangular, semi-sinusoidal, half-pulsed
- continuous and pulse emission
- wide frequency range
- high magnetic field induction

TREATMENT PROGRAMS AND SEQUENCES

- 50 preset treatment programs for CS60 applicator
- 28 preset programs for CS35 applicator
- 46 preset treatment programs for CP applicator
- 45 preset treatment programs for CPEP applicator
- 44 preset treatment programs for Dual Mode
- 50 user-defined programs
- 10 user-defined sequences
- favorite programs function





Technical parameters

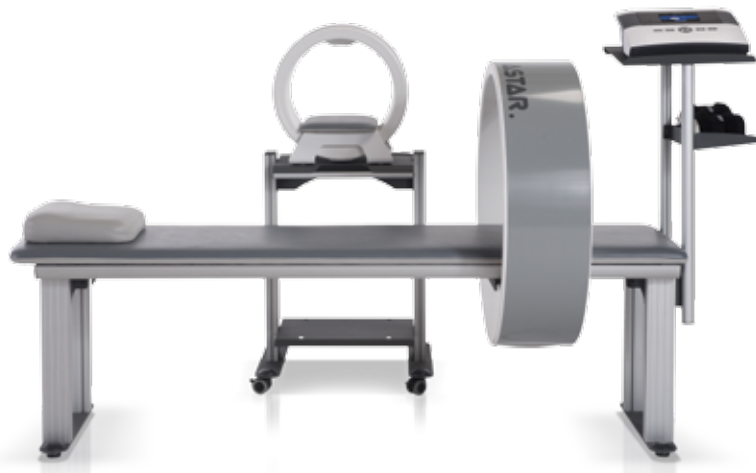
Maximum nominal induction in the applicator geometric center:	
solenoid applicator CS60	4 mT
solenoid applicator CS35	10 mT
CP applicator	3 mT
CPEP applicator	25 mT
Maximum nominal induction at the applicator surface:	
solenoid applicator CS60	6 mT
solenoid applicator CS35	12 mT
CP applicator	12,5 mT
CPEP applicator	50 mT
Maximum value of induction change (peak-to-peak value):	
solenoid applicator CS60	12 mT
solenoid applicator CS35	24 mT
CP applicator	25 mT
CPEP applicator	100 mT
Pulse mode parameters	pulse 1 s/ pause 0,5 – 8 s
frequency spectrum	0 – 50 Hz
treatment timer	maximum 60 min.
power supply	230 V \pm 10 % 50/60 Hz, 350 VA
controller dimensions	34 x 28 x 11 cm
controller weight	max 7 kg

Standard accessories

Mains cable	1 pc.
Spare fuse WTA-T 3,15 A/250 V	2 pcs.
Magnet	1 pc.
protective goggles	1 pc.
touchscreen stylus pen	1 pc.
touchscreen cleaning cloth	1 pc.
user guide	1 pc.

Optional accessories

Solenoid applicator CS60
Solenoid applicator CS35
CP plate applicator with a stand
CPEP plate applicator
Magnetic field couch
Trolley for CS35 magnetic field applicator



PhysioMG 827



This revolutionary device is the most modern magnetotherapy device on the market, and the advanced technology used in it creates a range of therapeutic options while maintaining the operation intuitive along with the highest quality of workmanship. The PhysioMG 827 is the only device on the market that allows the use of a solenoid applicator with a diameter of up to 75 cm.

Thanks to the Dual Mode option, the therapist may simultaneously apply two magnetic field applicators – solenoid with systemic and plate applicator with local effect.

A rich encyclopedia of 263 preset programs along with the methodology of their application, illustrated with 3D visualizations on 7" touchscreen guarantees the comfort of operation.

ERGONOMY

- Dual Mode treatments
- visual indicator of magnetic field activity (light illuminator)
- sensory indicator of a magnetic field activity (magnetic stripes)
- magnetic field frequency range settings with an accuracy of 0.01 Hz using the on-screen keyboard
- treatment time settings with an accuracy of 1 s using the on-screen keyboard
- two independent treatment channels
- 7" color display with a touch panel
- operation mode: program/ manual
- preset treatment program base
- treatment programs selected by name or medical field
- illustrated encyclopedia with treatment methodology description
- concise list of favorite programs
- edition of user-defined program and sequence names
- statistics of performed treatment procedures
- buzzer volume settings
- self-test – systematic control of the unit

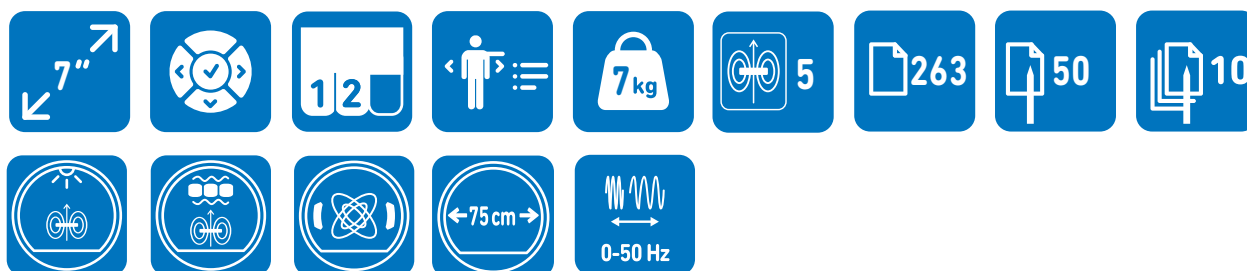
MAGNETIC FIELD

- shape: rectangular modified, triangular, sinusoidal, pulsed, semi-rectangular modified, semi-triangular, semi-sinusoidal, half-pulsed
- continuous and pulse emission
- wide frequency range
- high magnetic field induction

TREATMENT PROGRAMS AND SEQUENCES

- 50 preset treatment programs for CS75 applicator
- 50 preset treatment programs for CS60 applicator
- 28 preset programs for CS35 applicator
- 46 preset treatment programs for CP applicator
- 45 preset treatment programs for CPEP applicator
- 44 preset treatment programs for Dual Mode
- 50 user-defined programs
- 10 user-defined sequences
- favorite programs function





Technical parameters

Maximum nominal induction in the applicator geometric center:

solenoid applicator CS75	3 mT
solenoid applicator CS60	4 mT
solenoid applicator CS35	10 mT
CP applicator	3 mT
CPEP applicator	25 mT

Maximum nominal induction at the applicator surface:

solenoid applicator CS75	4,5 mT
solenoid applicator CS60	6 mT
solenoid applicator CS35	12 mT
CP applicator	12,5 mT
CPEP applicator	50 mT

Maximum value of induction change (peak-to-peak value):

solenoid applicator CS75	9 mT
solenoid applicator CS60	12 mT
solenoid applicator CS35	24 mT
CP applicator	25 mT
CPEP applicator	100 mT

Pulse mode parameters pulse 1 s/
pause 0,5 – 8 s

frequency spectrum 0 – 50 Hz

treatment timer maximum 60 min.

power supply 230 V \pm 10 %
50/60 Hz, 350 VA

controller dimensions 34 x 28 x 11 cm

controller weight max 7 kg

Standard accessories

Mains cable	1 pc.
Spare fuse WTA-T 3,15 A/250 V	2 pcs.
Magnet	1 pc.
protective goggles	1 pc.
touchscreen stylus pen	1 pc.
touchscreen cleaning cloth	1 pc.
user guide	1 pc.

Optional accessories

Solenoid applicator CS75
Solenoid applicator CS60
Solenoid applicator CS35
CP plate applicator with a stand
CPEP plate applicator
Magnetic field couch
Trolley for CS35 magnetic field applicator



Polaris HP

High power and biostimulation laser therapy

High power laser therapy is the latest specialty area in the field of physical therapy. It allows for deep tissue penetration with the use of high power laser radiation in a very short period, allowing you to achieve excellent therapeutic results, especially analgesic effect.

Polaris HP can also be used in traditional biostimulation laser therapy.

The Polaris HP laser therapy device is designed to perform the following therapeutic procedures:

- high power laser radiation in the invisible range (for 808 and / or 980 nm wavelength) with a visible pilot beam (with a wavelength of 660 nm). The radiation sources are built-in laser modules.
- biostimulation laser radiation in the visible range (for 660 nm wavelength) and invisible (for 808 nm wavelength) with the use of optional laser applicators.

THERE ARE AVAILABLE TWO VERSIONS OF POLARIS HP

Polaris HP S 18W

is equipped with two built-in laser sources with wavelengths of 808 and 980 nm and power of 8 and 10 W. Thanks to this the energy is applied with peak power reaching up to 18 W. We can therefore achieve a significant analgesic effect by activation of Wall and Melzack's control gate mechanisms.

LLLT accessories are optional.

Polaris HP M 8W

is equipped with a single high power laser source with a wavelength of 808 nm, and a power of 8 W. This allows you to achieve significant thermal effect, which greatly improves the local blood circulation, and consequently, increase circulation of oxygen.

LLLT accessories are optional.





BIOLOGICAL EFFECTS OF HIGH POWER LASER THERAPY

- acceleration of microcirculation
- increased oxygen circulation
- decreased erythrocyte aggregation
- increased fibroblast activity
- stimulation of DNA synthesis
- increased intracellular enzyme activity
- increased cell proliferation
- increase in transport through cell membranes
- activation of phagocytosis
- activation of metabolic processes in the cell
- activation of Wall and Melzack's control gate mechanism
- increase in nerve fibre action potential amplitude
- changes in the secretion of neurotransmitters, hormones, kinins

THE ABOVE-MENTIONED EFFECTS RESULT IN

- analgesic effect
- acceleration of exudate resorption
- acceleration of tissue regeneration
- increased flexibility of periarticular soft tissues and scars
- reduction of muscle tension

DUE TO THE WIDE RANGE OF APPLICATION, HIGH POWER LASERS MAY BE USED IN THE TREATMENT OF

- rheumatic diseases
- overload and degenerative changes of muscles and joints
- post-traumatic disorders
- myofascial trigger point therapy

The unit is equipped with a large 7" very high-resolution touchscreen. Its operation is intuitive, and the built-in therapeutic encyclopedia allows for accurate analysis of the treatment methodology, reducing the risk of improper performance of a treatment.



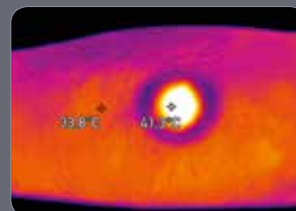
In order to enable efficient and precise deep intratissue laser therapy, a special **DILA** adapter has been developed (**Deep Intratissue Laser Adapter**). It is revolutionary optical system, which allows for laser beam formation in such a way to compensate power loss in surface tissues. The application of adapter reduces the thermal effect in the skin and subcutaneous tissue. The DILA adapter is particularly applied in the case of deeply located tissues, such as: deeply situated intramuscular changes, deep scars and trigger points. It is also designated for large treatment areas.



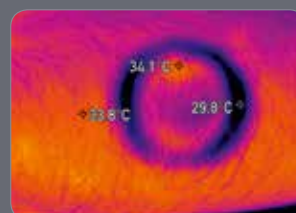
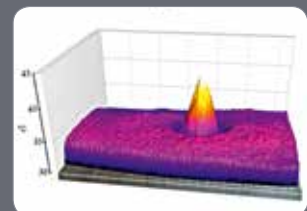
Beam shape of the Polaris HP formed in the DILA adapter (visible in glass of water).



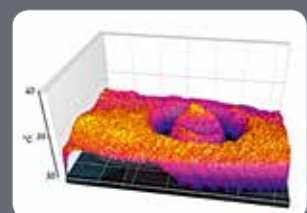
Figures and graphs present the thermal effect on the skin surface after application of a high power laser having a wavelength of 808 nm, output power of 4W in continuous mode of operation. After 30 sec. of irradiation with 5 cm² application adapter, the surface temperature of the treatment area increased from 33,9 to 41,3°C. The exact parameters have been applied for the irradiation with the use of DILA adapter of the treatment area with the same structure. The temperature at the skin surface increased from 33.9 to 34.1°C. This shows that the transmitted energy penetrates far deeper, and consequently it results in slight surface tissues heating and deeper thermal effect.



Application adapter 5 cm²



DILA



Polaris HP



Technical specification



LASER THERAPY

- three application adapters: 1 cm², 5 cm², DILA
- cooperation with: scanning applicators, cluster laser applicator and point probes
- radiation modes: continuous, pulse and super pulse
- duty cycle or pulse time setting
- automatic treatment time calculation on the basis of treatment area

TREATMENT PROGRAMS

- 50 programs for high power laser therapy treatment
- 51 programs for IR 808 nm point probe
- 20 programs for R 660 nm point probe
- 55 programs for cluster laser applicator
- 250 user-defined programs
- 8 programs with Nogier frequency
- 30 programs with Voll frequency
- favorite program list for each applicator
- illustrated therapeutic encyclopedia

TREATMENT SEQUENCES

- 26 preset treatment sequences for scanning laser applicator
- 50 user-defined sequences



Technical parameters

	Polaris HP S 18W	Polaris HP M 8W
radiation mode	continuous, pulse	continuous, pulse
waveform	rectangular, triangular (super pulse)	rectangular, triangular (super pulse)
duty factor	1 – 90 %, pulse 50 us	1 – 90 %, pulse 50 us
frequency	1 – 10 000 Hz	1 – 10 000 Hz
peak output power	max. 18 W	max. 8 W
average output power	max. 10 W	max. 8 W
treatment timer	max. 100 min	max. 100 min
mains supply	230 V, 50-60 Hz, 130 W 150VA	230 V, 50-60 Hz, 130 W 150VA
dimensions	36,1×30,4×15,1 cm	36,1×30,4×15,1 cm
weight	6 kg	6 kg

Standard accessories

mains cable	1 pc.	1 pc.
HP probe	808 nm/8 W, 980 nm/10 W	808 nm/8 W
application adapter – 1 cm ²	1 pc.	1 pc.
application adapter – 5 cm ²	1 pc.	1 pc.
measurement adapter for HP probe	1 pc.	1 pc.
protective goggles	2 pcs.	2 pcs.
touchscreen pen	1 pc.	1 pc.
spare fuses WTA-T 2 A/250 V	2 pcs.	2 pcs.
user guide	1 pc.	1 pc.
point probe holders	2 pcs.	2 pcs.
HP probe holder	1 pc.	1 pc.
touchscreen cleaning cloth	1 pc.	1 pc.

Optional accessories

Deep Intratissue Laser Adapter
point probe applicator R 660 nm/ 80 mW type with holder
point probe applicator IR 808 nm/ 400 mW type with holder
scanning applicator – type R + IR 100 mW + 450 mW with a stand
cluster laser applicator – type CL1800 5R x 40 mW + 4IR x 400 mW with holder
stand for cluster laser applicator CL1800
optical fiber applicator, straight, Ø 6 mm
optical fiber applicator, angled 45°, Ø 6 mm
optical fiber applicator, angled 45°, Ø 6 mm narrowed for laser puncture
fiber holder Ø 6 mm
bag for the unit and accessories
trolley dedicated for the unit and accessories



PhysioGo

Mobile physiotherapy

It is a modern family of exclusive devices dedicated to stationary physiotherapy and home healthcare environment therapy. The units allow you to perform a wide range of treatments in the field of electrotherapy, ultrasound therapy, combination therapy, laser therapy and magnetotherapy. Comfortable and functional, with a 7" touchscreen display, three independent treatment channels and encyclopedia. The battery can work up to 8 hours.

This compact unit includes 25 years of experience of Astar company.



Treatment programs divided by the medical fields

- Orthopaedics
- Sports medicine
- Aesthetic
- Rheumatology
- Neurology
- Urology
- Dermatology
- Angiology

Detailed information
www.PhysioGo.eu



i NOVO
AWARDS
2015

**DESIGN
WINNER**



Encyclopedia

The units are equipped with colour therapeutic encyclopedia with illustrated treatment methodology of all disease entities from the list of preset treatment programs.



Interface

- 7" color touchscreen
- Easy-to-read menu
- Advanced database of preset treatment programs
- The possibility of saving user-defined treatment sequences

Thanks to these solutions, the unit operation is very simple.



Sliding feet

Construction of the device allows you to change the height for easy operation.



Three independent treatment channels

The unit expanded by additional therapeutic channel, allows for simultaneous operation up to three independent treatment procedures.



Five therapies

Each of the eight available models, offers a different combination of therapies meeting the individual needs of physiotherapists.



Mobility in practice

Due to its vast functionality, the unit is perfectly suited for home healthcare environment therapy. The specially designed carrying bag greatly facilitate transport and the high quality battery allows for the unit operation up to eight hours.

PREMIUM PRODUCT LINE



100A *



200A *



300A *



400C *



500I *



601C



701C



701I

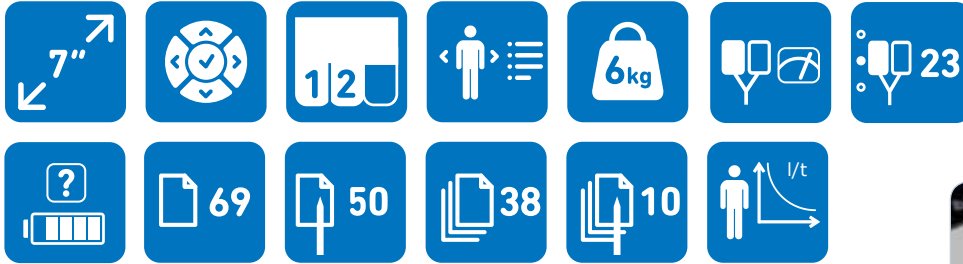


* battery option

PhysioGo 100A



It is a modern electrotherapy unit with 2 independent treatment channels. They enable diagnostics with the I/t curve or a procedure with one of the 23 currents available. It has an extensive base of 69 preset treatment programs complemented by 38 treatment sequences. As a wear assessment option, the electrode test assures the safety of the procedures.



PhysioGo 200A



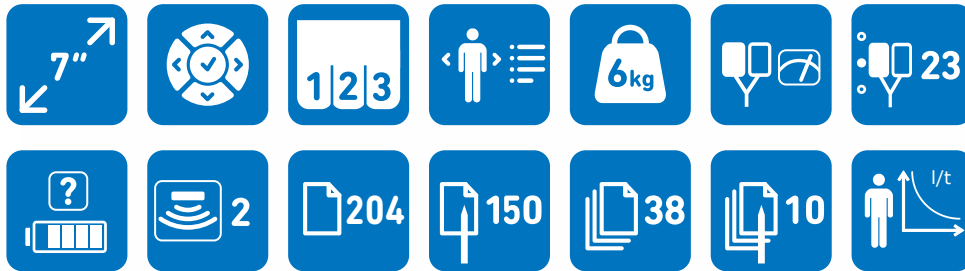
It is a functional ultrasound therapy unit. It supports water-resistant multi-frequency heads with the effective radiation areas of 1 cm² and 4 cm². The program mode offers 58 preset treatment programs which are described and illustrated in a color encyclopedia. In addition, the therapist can create 50 user-defined programs.



PhysioGo 300A



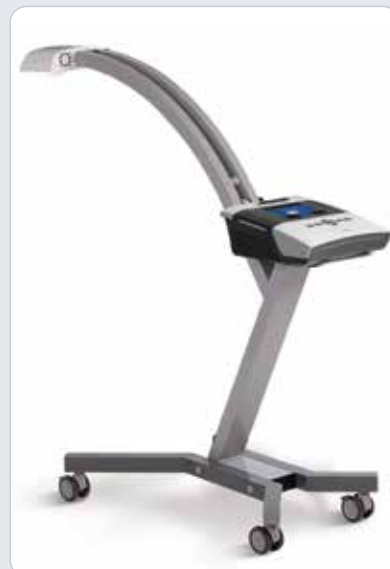
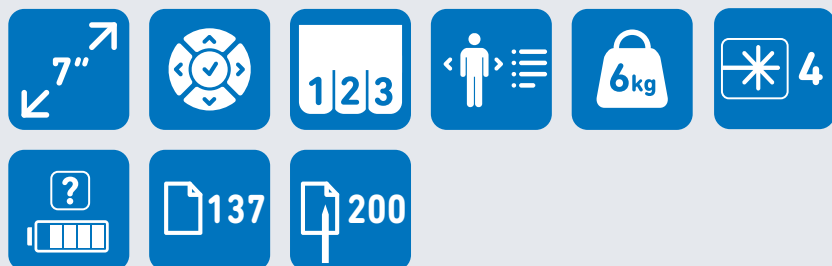
As many as 3 independent treatment channels enable electrotherapy, ultrasound therapy and combined therapy procedures. The therapist can use an integrated encyclopedia and an extensive base of 204 preset treatment programs and 38 treatment sequences which means combination of several currents in one procedure. The device enables determination of the I/t curve and the electrode test.



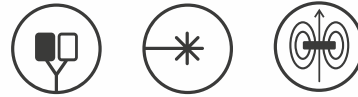
PhysioGo 400C



It is 3-channel low level laser therapy unit. It cooperates with R, IR probes, cluster applicator and scanning applicator. In the unit there are available 137 preset programs, 200 user-defined programs, as well as Voll and Nogier acupuncture programs. 7" color touchscreen, built in encyclopedia or sliding feet ensures ergonomic operation.



PhysioGo 500i



It is an advanced 2-channel unit for electrotherapy, laser therapy and magnetotherapy.
As many as 285 preset treatment programs are available, including Voll and Nogier acupuncture programs, and 38 electrotherapy sequences.
The Favorites option offers fast access to the list of the most frequently selected programs and ensures ergonomic operation.



PhysioGo 601C



It is a model which enables ultrasound and laser therapy treatments through 2 independent treatment channels. The therapist can use as many as 233 preset treatment programs. In addition, the therapist can create 250 user-defined programs.

Its compact dimensions, low weight of about 6 kg and integrated battery in a standard version make it a fully mobile device which can be used in home healthcare environment therapy.



PhysioGo 701C



It is another unit with 3 independent treatment channels for electrotherapy, ultrasound therapy, combined therapy and laser therapy. A huge base of 379 preset treatment programs and 38 treatment sequences for electrotherapy, 350 user-defined programs and a legible encyclopedia format allow the therapist to utilize its full potential. The battery allowing for work up to 8 hours without recharging is a standard feature.



PhysioGo 7011



It is a 3-channel unit offering great therapeutic possibilities. Depending on its features, the device can apply as many as 5 therapies available, i.e. electrotherapy, ultrasound therapy, combined therapy, laser therapy and magnetotherapy. An extensive base of as many as 420 preset treatment programs, 38 electrotherapy sequences and 400 user-defined programs show the possibilities of this model. The categorization of so many preset treatment programs by medical fields enhances its ergonomic operation greatly. The battery that enables work for up to 8 hours and a low weight of about 6 kg makes it fully mobile.



TECHNICAL SPECIFICATION

PhysioGo

100A 200A 300A 400C 500I 601C 701C 701I

Electrotherapy

operation in CC (stabilized output current) and CV (stabilized output voltage) modes

● ● ● ● ●

electrodes test

● ● ● ● ●

Currents

interferential (dynamic, isoplanar, one-channel (AMF))

● ● ● ● ●

TENS (symmetric, asymmetric, alternating, Burst)

● ● ● ● ●

TENS to spastic paralysis therapy

● ● ● ● ●

Kotz' / Russian stimulation

● ● ● ● ●

tonolysis

● ● ● ● ●

diadynamic (MF, DF, CP, CP-ISO, LP)

● ● ● ● ●

pulse (rectangular, triangular)

● ● ● ● ●

Trabert pulse, Leduc' pulse

● ● ● ● ●

unipolar sine surge

● ● ● ● ●

galvanic

● ● ● ● ●

microcurrents

● ● ● ● ●

Electrodiagnostics

electrodiagnostics with graphic presentation of I/t curve

● ● ● ● ●

automatic calculation of rheobase, chronaxie as well as accommodation coefficient

● ● ● ● ●

TECHNICAL SPECIFICATION

PhysioGo

100A 200A 300A 400C 500I 601C 701C 701I

Ultrasound therapy

operation frequency 1 MHz/ 3,5 MHz	●	●				●	●	●
effective radiation area 1 cm ² and 4 cm ²	●	●				●	●	●
continuous emission – thermal effect	●	●				●	●	●
pulse emission – micro massage effect	●	●				●	●	●
ultrasound heads provided with the contact control connected to treatment timer	●	●				●	●	●
precise control over the ultrasound wave emission during performed treatment	●	●				●	●	●
head sensitivity calibration	●	●				●	●	●
automatic control of emitted power	●	●				●	●	●

Laser therapy

laser radiation emission in continuous and pulse mode				●	●	●	●	●
automatic laser power measurement test				●	●	●	●	●
optical fiber applicators for laserpuncture and special applications (laryngology, dentistry, etc)				●	●	●	●	●
frequency and duty factor regulation in pulse mode for point probes and cluster laser applicator				●	●	●	●	●
irradiation modes for scanning laser applicator				●	●	●	●	●
automatic treatment time calculation on the basis of treatment parameters – dosage, power, duty factor, treatment area				●	●	●	●	●

Magnetotherapy

optional – magnetic field application with the use of one or two coupled applicators					●			●
convenient fastening of applicators by velcro belts					●			●
field type: sine, triangular, rectangular, half sine, half triangular, half rectangular					●			●
continuous and pulse emission					●			●
wide range of frequencies					●			●

TECHNICAL SPECIFICATION

PhysioGo

	100A	200A	300A	400C	500I	601C	701C	701I
Treatment programs								
preset treatment programs	69	58	204	137	247	195	341	382
user-defined programs	50	50	150	200	300	250	350	400
programs with Voll frequency				30	30	30	30	30
programs with Nogier frequency				8	8	8	8	8

Treatment sequences

preset treatment sequences for electrotherapy	38		38		38		38	38
user-defined sequences for electrotherapy	10		10		10		10	10

Technical specification

controller – max constant current in patient's circuit (CC mode)								
galvanic	40 mA		40 mA		40 mA		40 mA	40 mA
diadynamic, pulse	60 mA		60 mA		60 mA		60 mA	60 mA
interferential, Kotz, unipolar sine surge	100 mA		100 mA		100 mA		100 mA	100 mA
TENS	140 mA		140 mA		140 mA		140 mA	140 mA
tonololysis	100 mA		100 mA		100 mA		100 mA	100 mA
microcurrents	1000 µA		1000 µA		1000 µA		1000 µA	1000 µA
max voltage in patient's circuit (CV mode)	140 V		140 V		140 V		140 V	140 V
max ultrasound wave intensity in continuous/pulse mode	2/3 W/cm ²	2/3 W/cm ²			2/3 W/cm ²	2/3 W/cm ²	2/3 W/cm ²	2/3 W/cm ²
pulse frequency	16 Hz, 48 Hz, 100 Hz	16 Hz, 48 Hz, 100 Hz			16 Hz, 48 Hz, 100 Hz	16 Hz, 48 Hz, 100 Hz	16 Hz, 48 Hz, 100 Hz	16 Hz, 48 Hz, 100 Hz
duty factor for pulse mode	5 – 75 %, step 5 %	5 – 75 %, step 5 %			5 – 75 %, step 5 %	5 – 75 %, step 5 %	5 – 75 %, step 5 %	5 – 75 %, step 5 %
laser device class			3B	3B	3B	3B	3B	3B
max. magnetic field induction				10 mT (100 Gs)				10 mT (100 Gs)
battery				Li-Ion				
battery capacity				58 Wh				
mains supply				230 V, 50/60 Hz, max 75 W, 90 VA				
dimensions				34 x 28 x 11-16 cm				
weight				6 kg				

CONFIGURATION

PhysioGo

	100A	200A	300A	400C	500I	601C	701C	701I
Standard accessories								
patient's cable	2		2		2		2	2
ultrasound head 1/ 3,5 MHz, 4 cm ² with holder		1	1			1	1	1
electrotherapy electrodes 6 x 6 cm	4		4		4		4	4
electrotherapy electrodes 7,5 x 9 cm	2		2		2		2	2
viscose electrode covers 8 x 8 cm	8		8		8		8	8
viscose electrode covers 10 x 10 cm	4		4		4		4	4
velcro fixing belts 40 x 9 cm	2		2		2		2	2
velcro fixing belts 100 x 9 cm	2		2		2		2	2
gel 500 g		1	1			1	1	1
DOOR remote connector				1	1	1	1	1
laser warning labels (set)				1	1	1	1	1
touchscreen stylus pen	1	1	1	1	1	1	1	1
touchscreen cleaning cloth	1	1	1	1	1	1	1	1
masking covers with cutout		2	2	2	2	2	2	2
user guide	1	1	1	1	1	1	1	1
battery						●	●	●
protective goggles				●				
Optional accessories								
disposable self-adhesive electrodes 5 x 5 cm, 5 x 10 cm	○		○		○		○	○
point electrodes 6 mm, 10 mm, 15 mm, 20 mm	○		○		○		○	○
crocodile clip	○		○		○		○	○
sand-filled bag 21 x 14 cm, 21 x 28 cm	○		○		○		○	○
ultrasound head 1/ 3,5 MHz, 1 cm ² with holder		○	○			○	○	○
point probe R 660 nm/80 mW with holder				○	○	○	○	○
point probe IR 808 nm/400 mW with holder				○	○	○	○	○
scanning applicator R + IR 100 mW + 450 mW with stand				○	○	○	○	○
cluster laser applicator CL1800 5R x 40 mW + 4IR x 400 mW with holder				○	○	○	○	○
optical fiber applicator, straight, Ø 6 mm				○	○	○	○	○
optical fiber applicator, angled 45°, Ø 6 mm				○	○	○	○	○
optical fiber applicator, angled 45°, Ø 6 mm narrowed for laser puncture				○	○	○	○	○
fiber holder Ø 6 mm				○	○	○	○	○
stand for cluster laser applicator				○	○	○	○	○
magnetic field applicator – CPE type with covers					○			○
magnet					○			○
patient's stop switch	○		○		○		○	○
PRO bag for the unit and accessories	○	○	○	○	○	○	○	○
trolley dedicated for the unit and accessories	○	○	○	○	○	○	○	○
battery	○	○	○	○	○			
protective goggles					○	○	○	○

PhysioGo.Lite LASER

Etius Family

Sonaris

Avaco

Lumina

Versa, Versa X

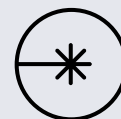


BASIC PRODUCT LINE



PhysioGo.Lite LASER

Biostimulation laser therapy



Check out the new, ergonomic biostimulation laser therapy unit made by ASTAR – a Polish manufacturer of physiotherapy and rehabilitation equipment. ASTAR with its 25 years of experience in the physiotherapy field has created a device combining modern technology as well as ergonomics and comfort of use.

PhysioGo.Lite Laser supports treatment of diseases from the key areas of its application including orthopedics, rheumatology, sports medicine and aesthetic medicine. Due to the relatively low weight and the possibility of battery application, the unit allows you to work both in the physiotherapist's centers and conduct home healthcare environment therapy treatments. Built-in treatment programs make it easy and convenient to perform treatments with the use of PhysioGo.Lite Laser unit.

PhysioGo.Lite Laser is a high quality biostimulation laser therapy device that non-invasively supports tissue regeneration and prevents the development of disease processes. Importantly, tissue biostimulation is a completely safe treatment – low laser energy does not cause a strong thermal effect and tissue damage. The device is also adapted to work in the Nogier and Voll frequencies, thanks to which it also works well in laserpuncture treatments.

Built-in illustrated therapeutic encyclopedia contains as many as 175 programs for disease entities, and the automatic power test of laser applicators ensures that the correct exposure values are maintained.





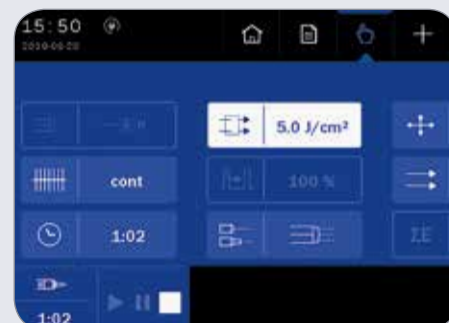
Features

- 5" touchscreen
- Modern interface
- Treatment statistics
- Applicator statistics
- Automatic laser power measurement test
- Illustrated therapeutic encyclopedia



Program mode

Using PhysioGo.Lite Laser in program mode is convenient and simple. The user can choose from 175 programs prepared for common disease entities, as well as use predefined treatment procedures, Nogier and Voll acupuncture programs.



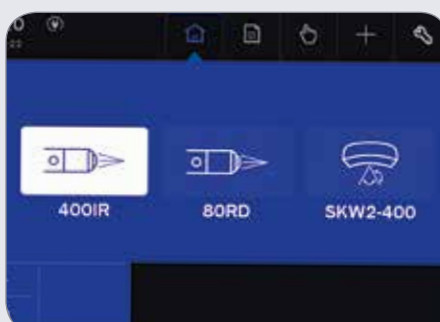
Manual mode

The device allows you to create and save your own treatment settings. It is also possible to copy the treatment parameters from the Therapeutic Encyclopedia and adapt them to the individual needs of the patient.



Illustrated therapeutic encyclopedia

The unit has a built-in Therapeutic Encyclopedia, which contains basic information on the use of biostimulation laser therapy for individual disease entities, including the information about the type of applicator, parameters and the recommended frequency of treatments.



Three applicator sockets

PhysioGo.Lite Laser allows you to simultaneously connect three applicators and freely switch them while working with the device. The applicators are selected from the list of available accessories.



Mobility

PhysioGo.Lite Laser is lightweight and easy to transport. Specially designed, comfortable PRO Bag will hold the unit and its accessories.

PhysioGo.Lite LASER



Treatment programs and sequences

PRESET TREATMENT PROGRAMS

for point laser applicators with 808nm wavelength	39
--	----

for point laser applicators with 808nm wavelength	18
--	----

PRESET TREATMENT SEQUENCES

for point laser applicators	26
-----------------------------	----

for cluster laser applicator	54
------------------------------	----

voll's frequencies programs	30
-----------------------------	----

nogier's frequencies programs	8
-------------------------------	---

user-defined programs (for every applicator)	50
---	----



TECHNICAL SPECIFICATION

Technical parameters

ENERGY DOSE	
point probe applicators	0,5 J/cm ² – 15 J/cm ² regulation step 0,5 J/cm ²
scanning laser applicators	0,5 J/cm ² – 20 J/cm ² regulation step 0,5 J/cm ²
cluster laser applicator	1 J/cm ² – 15 J/cm ² regulation step 0,5 J/cm ²
DELIVERED ENERGY	
point probe applicators	max 450 J
scanning laser applicators	max 3000 J
cluster laser applicator	max 3000 J
frequency	1 Hz – 5000 Hz
treatment timer	1s – 100 minutes
power supply	230 V +/- 10% 50/60 Hz, 350 VA
controller dimension	30x23x11 cm
controller weight	max 3 kg



Standard accessories

mains cable	1 pc.
safety glasses for biostimulation laser therapy	2 pcs.
warning labels (set)	1 pc.
DOOR blocking plug	1 pc.
touchscreen stylus pen	1 pc.
touchscreen cleaning cloth	1 pc.
masking covers with cutout	2 pc.
spare fuse WTA-T 3,15 A/250V	2 pc.
user guide	1 pc.

Optional accessories

point probe R 660 nm/80 mW with holder
point probe IR 808 nm/400 mW with holder
scanning applicator R+IR 100 mW + 450 mW
cluster laser applicator 5Rx40 mW + 4IRx400 mW
optical fiber applicator, straight, Ø 6 mm
optical fiber applicator, angled 45°, Ø 6 mm
optical fiber applicator, angled 45°, Ø 6 mm, narrowed
fiber holder Ø 6 mm
PRO bag
Versa trolley
battery



Multifunctional units

Etius Family

All units are distinguished by the fact that they have got two completely independent treatment channels. Thanks to this solution it is possible to perform simultaneous treatments with different parameters on one or two patients. This possibility allows for huge savings in therapist working time.

Basic area of their functionality is electrotherapy, in which the units provide the availability of all typical and commonly used currents. Additional functionality is available with an extensive range of accessories. This concept allows for the gradual units development along with the emerging needs.

The great advantage is an extensive database of treatment programs which is combined with connected applicators. This allows the therapist for easy selection of the appropriate parameters to the type and stage of the disease.

Due to its small size and weight as well as vast functionality and availability of multiple types of probes and heads, the unit is perfectly suited for home healthcare environment therapy.



Etius

The basic unit in the family. Its use is strictly focused on electrotherapy and electrodiagnostic.



Etius U

Is intended to use in electrotherapy, ultrasound therapy, combination therapy and electrophonophoresis.

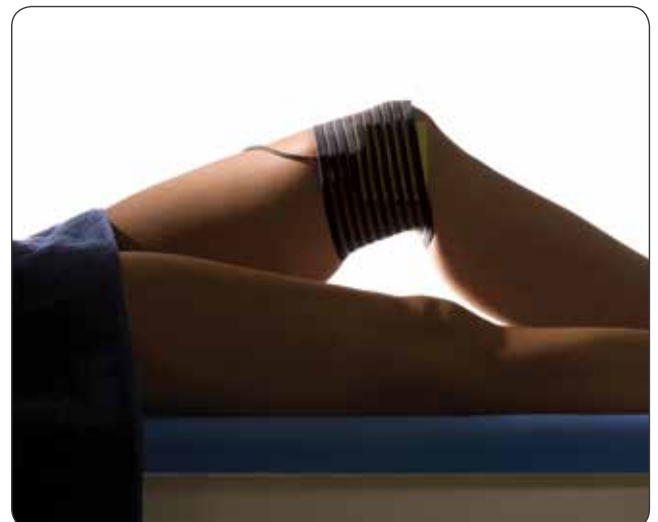
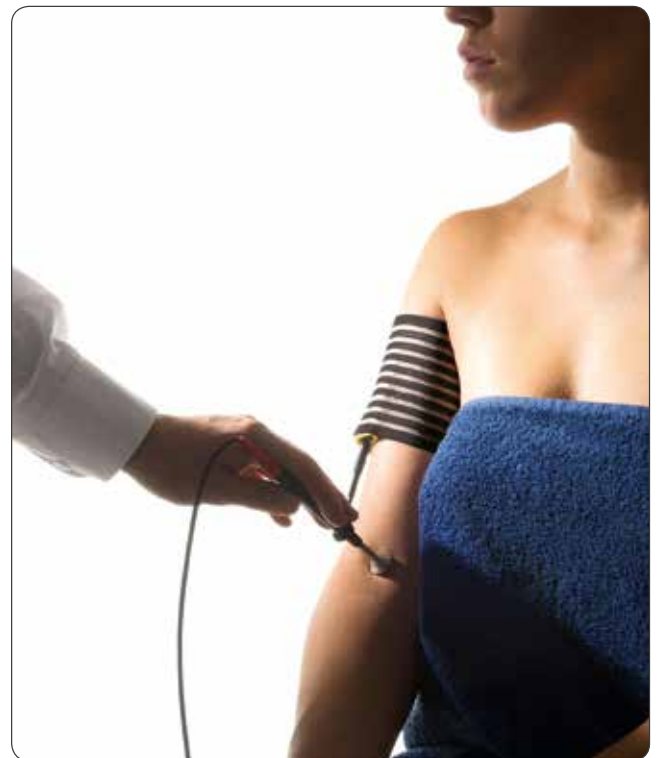


Etius



This is the first device from the basic Etius family line. Its use is oriented strictly on electrotherapy and electrodiagnostics.

In addition to all the typical currents used in electrotherapy, the device has been equipped with completely new possibilities, such as: application of microcurrents, unipolar sine surge current and specially developed TENS currents for spastic paralysis therapy.



Etius U



The basic function of the entire Etius family line is complete, two-channel electrotherapy. The scope of possibilities of Etius U unit, as the first representative of multifunctional device line, has been expanded to include ultrasound therapy. Thanks to this, it can be used for both electrotherapy, electrodiagnostics, ultrasound therapy and combined therapy treatments supported with water-resistant ultrasound heads.



Features

combined therapy
graphic LCD display

Etius

Etius U

●

●

●

Electrotherapy

application channels
CC/CV mode
interrupted mode for unipolar currents
electrodes test

2

2

●

●

●

●

●

●

Ultrasound therapy

precise indicator of head contact
head power stabilization

●

●



Currents

interferential dynamic
interferential isoplanar
interferential one-channel (AMF)
TENS symmetric
TENS asymmetric
TENS alternating
TENS burst
TENS to spastic paralysis therapy
Kotz'/Russian stimulation
tonolysis
diadynamic (MF, DF, CO, CP-ISO, LP)
rectangular pulse
triangular pulse
trabert pulse
Leduc
neofaradic
unipolar sine surge
galvanic
microcurrents

●

●

●

●

●

●

●

●

●

●

●

●

●

●

●

●

●

●

●

●

●

●

●

●

●

●

●

●

●

●

●

●

●

●

●

●

●

●

Program modes

	Etius	Etius U
preset treatment procedures	89	237
preset treatment programs	59	207
preset treatment sequences for electrotherapy	30	30
favorite programs	20	80

Technical parameters

dimensions WxDxH	30x23x11 cm
weight	max 6 kg
mains supply	230 V/70 W

Electrotherapy

max intensity of interferential, Kotz, unipolar sine surge currents	100 mA
max intensity of TENS currents	140 mA
max intensity of diadynamic, pulse currents	60 mA
intensity of galvanic currents	40 mA
max intensity of microrcurrents	1000 uA
max voltage	100 V

Ultrasound therapy

max intensity of ultrasound wave	2/3 W/cm ²
pulse mode frequency	16,48,100 Hz
duty factor	10, 25, 50, 75 %



Standard accessories

	Etius	Etius U
mains cable	●	●
patient's cable	2	2
electrodes 6x6 cm	4	4
electrodes 7,5x9 cm	2	2
viscose electrode covers 8x8 cm	8	8
viscose electrode covers 10x10 cm	4	4
velcro fixing belts 40x10	2	2
velcro fixing belts 100x10	2	2
spare fuse WTA-T 1A/250V	2	2
gel 0,5 l		1
ultrasound head 1MHz, 4 cm ² with holder		1

Optional accessories

disposable electrodes 32x40 mm	○	○
disposable electrodes 56x56 mm	○	○
disposable electrodes 56x126 mm	○	○
point electrode 6 mm diameter	○	○
point electrode 10 mm diameter	○	○
point electrode 15 mm diameter	○	○
point electrode 20 mm diameter	○	○
adapter for point electrodes	○	○
crocodile clip	○	○
sand filled bag 21x14 cm	○	○
sand filled bag 21x28 cm	○	○
ultrasound head 1 MHz 1cm ² with holder		○
gel 0,5 l		○
patient's stop switch	○	○
PRO bag	○	○
Versa, Versa X trolley	○	○

Sonaris

Ultrasound therapy and phonophoresis

The unit is equipped with specially designed ultrasound heads with 1 MHz and 3,5 MHz frequencies which allow both surface and deep tissue structures to be treated selectively.

Two head sizes – 1 cm² and 4 cm² – are suitable respectively for small and larger areas of treatment.

Sonaris has a precise five level head contact indicator with acoustic signalization.



The unit is available in two versions:

- S** for two, multifrequency heads,
- M** for one, single frequency head 1 MHz/4 cm²

Small dimensions of the unit and its light weight make it easy to transport and use beyond its dedicated place of operation. As an additional accessory, for the transport purpose there is available bag for the unit.

Combination therapy performed with Etius and Etius ULM is possible.





Features

precise head contact indicator
graphic display
head power stabilization

Sonar S

Sonar M

●	●
●	●
●	●

Program modes

preset treatment programs
user-defined programs

52	42
10	10

Technical parameters

max intensity of ultrasound wave
pulse mode frequency
duty factor
power supply
dimensions HxDxW
weight

2,5 W/cm ²
16, 48, 100 Hz
10, 25, 50, 75 %
230 V / 75 W 230 V / 40 W
30x23x11 cm
max 2,5 kg

Standard accessories

mains cable
ultrasound head 1 MHz, 4 cm ² with holder
ultrasound head 1/3,5 MHz, 4 cm ² with holder
spare fuse WTA-T 1A/250V
gel 0,5 l

Sonar S

Sonar M

●	●
	●
●	
2	2
●	●

Optional accessories

ultrasound head 1/3,5 MHz, 1 cm ² with holder
combination therapy cable
PRO bag
Versa trolley

○	
○	○
○	○
○	○

Avaco

Vacuum therapy

Avaco as a vacuum therapy unit is a perfect supplement for electrostimulators. It may be used for application of currents by suction cups with integrated electrodes.

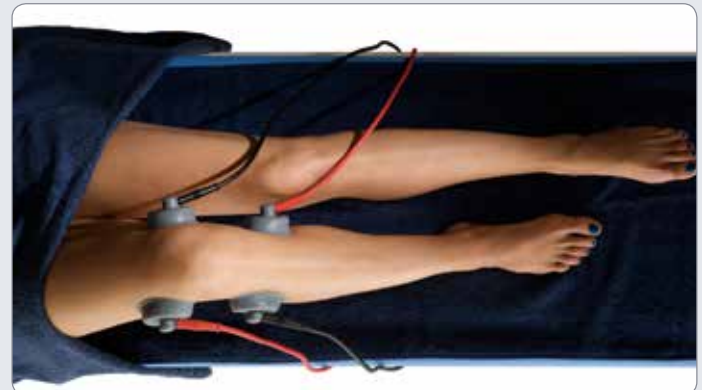
Thanks vacuum placement of electrodes treatments performing is considerably facilitated, especially in areas where it is difficult to place the plane electrodes.

Moreover, in pulse mode the effect of mechanic massage occurs which gives additional advantage – increase of blood flow and metabolism.

Synchronized mode with generated current is an innovative feature. Vacuum is boosted in stimulation phase and decreased in rest time. This mode is dedicated to training programs.

Self-sealing suction cups significantly increase the comfort of operation, particularly in the case of single-circuit operation.

The possibility of choosing different sizes of suction cups effectively affects the therapy optimization – depending on the type and place of application.





- two circuits independently operated (easy to operate in single-circuit mode)
- modes:
 - continuous
 - pulse
 - pulse with variable pulses
 - synchronized with current (to operate with training programs)
 - pulse with increased lower vacuum
- 2 dimensions of suction cups: 60 mm (standard) and 90 mm (optional)
- self-sealing suction cups (caps are not required in single-circuit operation)
- operation with electrostimulators manufactured by Astar company



Features

self-sealing suction cups
two independent circuits
possibility of suction power regulation
detection of high water level in a container

Avaco

●

●

●

●

Operation modes

continuous
pulse
pulse with variable pulses
synchronized with current
pulse with increased lower vacuum

●

●

●

●

●

Technical parameters

pulse frequency	6, 12, 20, 40, 60 imp/min
max vacuum pressure	500 mbar/hPa
suction cups	4
mains supply	230 V/20 W
dimensions WxDxH	30x26x12 cm
weight	max 3,5 kg

Standard accessories

mains cable	●
electrotherapy connection cable	2
suction hose (black)	1
suction hose (red)	1
suction hose (white)	1
suction hose (blue)	1
suction cups Ø 60 mm	4
viscose pads Ø 60 mm	4
spare fuse WTA-T 1A/250 V	2
suction hoses connector	2

Optional accessories

suction cups Ø 90 mm	○
viscose pads Ø 90 mm	○
Versa trolley	○

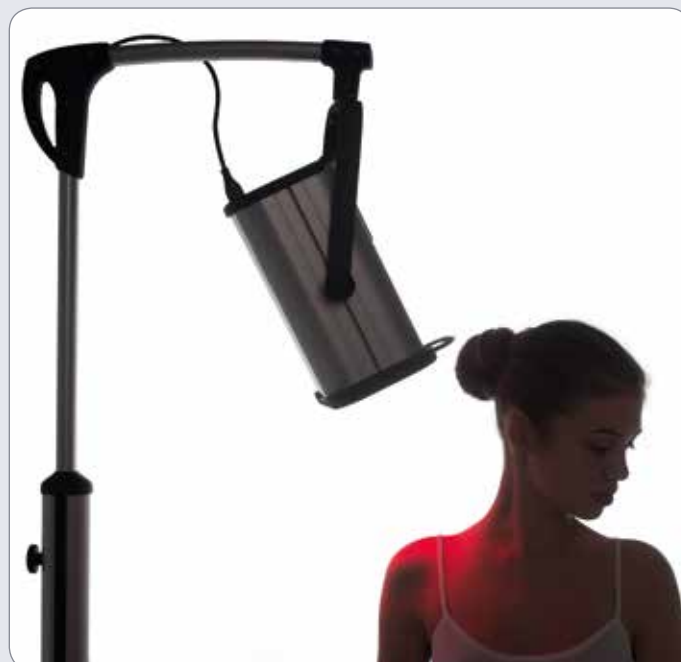
Lumina



New, functional and attractive form of already known to our customers therapeutic lamp designed for heating treatments with the use of thermal energy emitted by the radiator. The lamp uses infrared radiation in the IR-A and IR-B ranges. The desired radiation may be obtained by applying a suitable filter.

This lamp is commonly applied in classical physiotherapy as well as in sports medicine. In addition, it has found its application in beauty salons.

Thanks to included table stand, the user can easily transform Lumina into a table device.



Functionality

By the built-in controller, lamp settings are easily accessible.



Fully adjustable

Thanks to additional side holders and special hinges, the lamp may be set in any direction.



Ease of use

Filters may be changed practically in one motion. Additionally, each of them is protected from damage by metal mesh.

Elements of construction (standard):

- stand with high quality wheels
- table stand

**Mobility**

The lamp is mounted on a specially designed mobile stand. To facilitate the work of physiotherapists, wheels are equipped with locking brakes.

Technical parameters

treatment timer	1 – 30 min.
max emitter power	375 W
mains supply	230 V \pm 10 %, 50/60 Hz
power consumption	max 450 W
high of the stand	min 1,2 m, max 1,9 m
size of the stand base W x D	max 0,5x0,6 m
weight of the stand with lamp	13,7 kg (with bulb and filter)
size of the table stand (without lamp) W x D x H	30,0x31,5x6,0 cm
size of the table stand with lamp W x D x H	30,0x39,0x41,0 cm
weight of the table stand with lamp	5,5 kg (with bulb and filter)

Lumina**Standard accessories**

mains cable
 375 W radiator
 blue filter
 red filter
 spare fuse T 3,15 A/250V
 protective goggles for the patient
 protective goggles for the therapist



Filters, protective goggles for the patient and for the therapist



Versa, Versa X

The latest trolley line has been designed specifically for customers of ASTAR products.

By the shelf height adjustment, it is possible to place up to three units.

Equipment allows you to keep all applicable accessories and installation of additional special holders for paper towels and gel. Drawers for accessories may be easily mounted to shelves. These elements create the possibility of any desired configuration.

Broad and aesthetic wheels enable trolley mobility, while brakes guarantee stability and safety during treatments.

Modern and durable trolleys should meet the requirements of all physiotherapy cabinets.

ERGONOMICS

- modern design
- dedicated to **ASTAR** products
- mobility (aesthetic wheels with brakes)
- possible configuration
 - holder for electrodes/suction cups/gel/paper towel
 - drawer for accessories
- shelf height adjustment (second and third)





Versa
trolley



Versa X
trolley



Technical parameters

	Versa trolley	Versa X trolley
upper shelf carrying capacity	max 10 kg	max 10 kg
bottom shelf carrying capacity (along with drawer and its content)	max 7 kg	max 7 kg
bottom shelf regulation range	approx. 60 cm	approx. 50 cm
upper shelf external dimension (WxD)	58,0 x 34,0 cm	58,0 x 39,0 x cm
upper shelf internal dimension (WxD)	39,5 x 30,0 cm	39,5 x 35,0 cm
bottom shelf dimension (WxD)	40,0 x 26,0 cm	40,0 x 26,0 cm
drawer external dimension (WxDxH)	39,0 x 33,0 x 9,0 cm	39,0 x 33,0 x 9,0 cm
drawer internal dimension (WxDxH)	28,5 x 18,5 x 8,0 cm	28,5 x 18,5 x 8,0 cm
trolley dimensions (WxDxH)	58,0 x 49,0 x 87,5 cm	58,0 x 49,0 x 89,0 cm
weight	14 kg	23 kg

Standard and optional accessories










shelves	2	2
stabilizer dedicated for Impactis M unit		●
power supply holder		●
gel holder	○	2
drawer for accessories	○	●
paper towel holder	○	●

● standard equipment
○ optional equipment

Versa
trolley



Versa X
trolley

	PhysioGo 701I	PhysioGo 701C	PhysioGo 601C	PhysioGo 500I	PhysioGo 400C	PhysioGo 300A	PhysioGo 200A	PhysioGo 100A	Polaris HP	PhysioMG 827	PhysioMG 825	PhysioMG 815	Impactis M+		Etius U	Etius	PhysioGo Lite Laser	Avaco	Lumina	Sonaris
ELECTROTHERAPY 	●	●		●		●		●							●	●				
BIOSTIMULATION LASER THERAPY 	○	○	○	○	●				○								●			
HIGH POWER LASER THERAPY 									●											
MAGNETOTHERAPY 	○			○						●	●	●								
VACUUM THERAPY 																		●		
ULTRASOUND THERAPY 	●	●	●			●	●								●					●
PHOTOTHERAPY 																			●	
SHOCKWAVE THERAPY 													●							
COMBINED THERAPY 	●	●				●									●					

basic function ●
 optional function ○

PREMIUM PRODUCTS LINE

BASIC PRODUCTS



ELECTROTHERAPY

A physiotherapy method based on electric currents applied to the body. The way the therapy affects the body depends on the type of used current and set parameters.

The most common benefits: reduction or even disappearance of pain, muscle stimulation, boost in cell metabolism, hematoma and effusion resorption and congestive effects on tissues.

Electrotherapy also works well in the transcutaneous application of medication, namely iontophoresis.

Electrodiagnostic of nervous-muscle system allows for the quantitative assessment of muscle function.



BIOSTIMULATION LASER THERAPY

Laser light, as opposed to the common radiation, is monochromatic, coherent and polarized. These features constitute the biostimulation properties of low power laser radiation. During the biostimulation temperature of tissues does not rise more than 0,5°C above the normal level.

Each year the laser light stimulation becomes more and more popular for the following reasons: it improves microvasculature, stimulates angiogenesis process, boosts up number and activity of enzymes and changes the secretion of neurotransmitters and hormones.

The above mentioned effects are anti-inflammatory and analgesic. They accelerate the regeneration processes of tissues and resorption of exudate.



HIGH POWER LASER THERAPY

High power laser therapy is the latest specialty area in the field of physical therapy. It allows for deep tissue penetration with the use of high power laser radiation in a very short period, allowing you to achieve excellent therapeutic results, especially analgesic effect.

The biological effects result in:

- analgesic effect,
- acceleration of exudate resorption,
- acceleration of tissue regeneration,
- increased flexibility of periarticular soft tissues and scars,
- reduction of muscle tension.

Due to the wide range of application, high power lasers may be used in the treatment of:

- rheumatic diseases,
- overload and degenerative changes of muscles and joints,
- posttraumatic disorders,
- myofascial trigger point therapy.



MAGNETOTHERAPY

Magnetotherapy is a method of physiotherapy based on the alternating low frequency magnetic field that affects the body.

Magnetic field creates biostimulation effect that intensifies the oxygen utilization and improves cellular respiration, so improved tissue metabolism is an outcome. Additionally, this method enlarges blood vessels (vasodilatation and angiogenetic processes).

Advantages of magnetic field also include the penetration of all tissues which makes the treatment easier.



VACUUM THERAPY

Therapeutic method where the pulsating and sucking effect is caused by the vacuum wave.

Vacuum affecting subcutaneous tissues causes several effects, mainly due to improvement of the blood and lymph circulation. It supports treatments of venostasis and lymphostasis, wounds and scars healing, improves elasticity of tissues and increased hyperemia occurs. It accelerates burning of excess fat tissue and contraction of loose skin. It reduces muscle tension and relieves pain.

In the vacuum therapy combined with electrotherapy, the patient's sensitivity to feel an electric current is decreased through the pulsating and sucking action of the electrodes.

This technique is particularly recommended in cases where the electrical stimulation treatments must be performed on patients with exceptional sensitivity for electric current.

As a consequence of improved blood circulation beneath the electrodes, tissues conductivity is improved. In pulse mode, the additional effect of mechanical massage occurs.



ULTRASOUND THERAPY

There is a great number of advantages of how the ultrasound wave influences the human body. The most important advantages include: the improved synthesis of collagen and intercellular calcium synthesis, boosted angiogenesis process, stimulation of oxidation processes in cells and changes in cell membranes and speed of conductivity of nerve fibres.

The ultrasound therapy is widely used for the treatment of inflammations, pain syndromes, engorgements, for the speeding up tissue regeneration, improving resilience of connective tissue and reducing tension in muscles, sinews and ligaments.

The phonophoresis is a method of transcutaneous application of medicine using ultrasounds. Ultrasound waves modifies the permeability of the skin that increases the medicine absorption from the gel.



PHOTOTHERAPY

The infrared light is readily absorbed by human tissues. It warms the tissues up so that it loosens tension in muscles, enlarges blood vessels, and rises pain threshold and improves metabolism.



SHOCKWAVE THERAPY

Is one of the most effective methods for treating pain of the musculoskeletal system. By the penetration of the waves deep into the body, with adequately selected procedure parameters, the therapy is effective in pathological processes located in both superficial and deeper tissues.

The shockwave therapy procedure might be extremely effective in the treatment of the lesions in tendons, ligaments, articular capsules as well as muscles and bones. It treats conditions that traditionally require a surgical intervention.

The key areas of application are rehabilitation, sports medicine, orthopaedics and aesthetic medicine.



COMBINED THERAPY

Also known as combination or compound therapy. A treatment used in physical therapy which combines simultaneous action of ultrasonic waves with electrostimulation. During the treatment, the unit generates relevantly modulated ultrasound waves and low and medium frequency micro-currents or currents or TENS currents.

In the combination therapy, the body's reactions are generated by simultaneously applied ultrasounds and electrotherapy. As a result, more blood is supplied to tissues due to vasodilation and heat is produced in the vessels.

This also accelerates tissue absorption, increases the permeability of cell membranes and the skin. Owing to the latter phenomenon, the transdermal administration of a drug during sonotherapy treatments can bring about good curative effects.

Phonophoresis – is a modern method of introducing a drug with the use of ultrasounds. In order to strengthen the action of ultrasound, instead of a conventional coupler, gel is applied that contains active substances, i.e. anti-inflammatory, analgesic, blood supply improving or the scar tissue elasticising substances. Putting them into tissues by means of ultrasounds provides faster and deeper penetration of medicinal substances.

Combination or associated therapy applied in rehabilitation combines the impacts ultrasounds and electrotherapy on the human body. In particular, it is known for its analgesic, anti-inflammatory, and chemical reaction stimulating action. It speeds up the metabolism in cells and gives immediate relief by reducing muscle tension, stimulates nerves and muscles, increases joint mobility, speeds up metabolism and tissue re-generation, enhances tissue trophicity, reduces oedema, improves the blood circulation in tissues, relaxes muscles, improves the extensibility of collagen fibres. Basic indications for the use of combination therapy in physiotherapy.

Combination therapy enables the use of ultrasound therapy in combination with electrical stimulation of muscles. In the combination therapy, ultrasounds are combined with a high-voltage pulsed current, premodulated runs or TENS currents in order to obtain a therapeutic effect.

Warranty

Warranty for all units

2 years





















Accessories	Years
point laser probe R 660 nm/80 mW	2 *
point laser probe IR 808 nm/400 mW	2 *
scanning applicator R+IR 100 mW+ 450 mW	2 *
cluster laser applicator 5Rx40 mW+ 4IRx400 mW	2 *
single-frequency head 1 MHz, 4 cm ²	2
dual-frequency head 1/3,5 MHz, 4 cm ²	2
dual-frequency head 1/3,5 MHz, 1 cm ²	2
solenoid applicator CSP75	2
solenoid applicator CSP60	2
solenoid applicator CSP35	2
solenoid applicator CSL60	2
CP applicator	2
magnetic field applicators CPE	2
Versa trolley	2
Versa X trolley	2
trolley for magnetic field applicator 35 cm	2
couch with shelf, blue upholstery	2
laser therapy protective goggles	2
protective goggles for patient	2
protective goggles for therapist	2

* laser radiation sources are covered
by one year warranty period

Accessories beyond scope of warranty

mains cable
patient's cable
combined therapy cable
silicone electrodes 6x6 cm
silicone electrodes 6x12 cm
silicone electrodes 7,5x9 cm
viscose covers 8x14 cm
viscose covers 8x8 cm
viscose covers 10x10 cm
velcro fixing belt 40x10 cm
velcro fixing belt 100x10 cm
adhesive electrodes 3x4 cm
adhesive electrodes 5,5x5,5 cm
adhesive electrodes 5,5x12,5 cm
point electrode 6 mm
point electrode 10 mm
point electrode 15 mm
point electrode 20 mm
point probe adapter
optical fiber applicator, straight
optical fiber applicator, angled 45°
optical fiber applicator, angled 45°, narrowed
fiber holder
sand filled bag 21x14 cm
sand filled bag 21x28 cm
crocodile clip
375 W radiator
blue filter
red filter
Pro bag
Opti bag
additional fuses
DOOR blocking plug
ultrasound gel 0,5 l
patient's stop switch
suction cups Ø 60/90 mm
viscose cups Ø 60/90 mm
suction hoses
suction hoses connector

Legend

	7" color touchscreen		Electrode test
	Operation by the knob		23
	Operation by the keyboard		2
	Encyclopedia		4
	Battery in option		2
	Battery in standard		285
	Device weight, dedicated bag		300
	Maximum possible setpoints of 5 bar/25 Hz		38
	One treatment channel		10
	Two completely independent treatment channels		I/t
	Three completely independent treatment channels		

ΔSTAR.

43-382 Bielsko-Biała
33 Swit Street
Poland

telephone numbers

+48 33 827 18 69

+48 33 827 18 56

+48 33 827 18 89

export@astar.eu

www.astar.eu

Substantive support

www.ephysiotecchnology.com 